

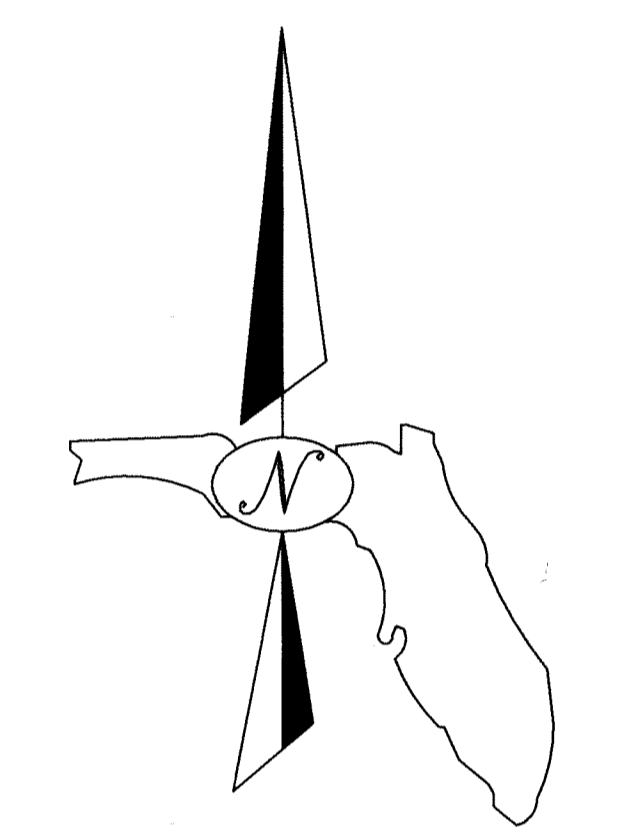
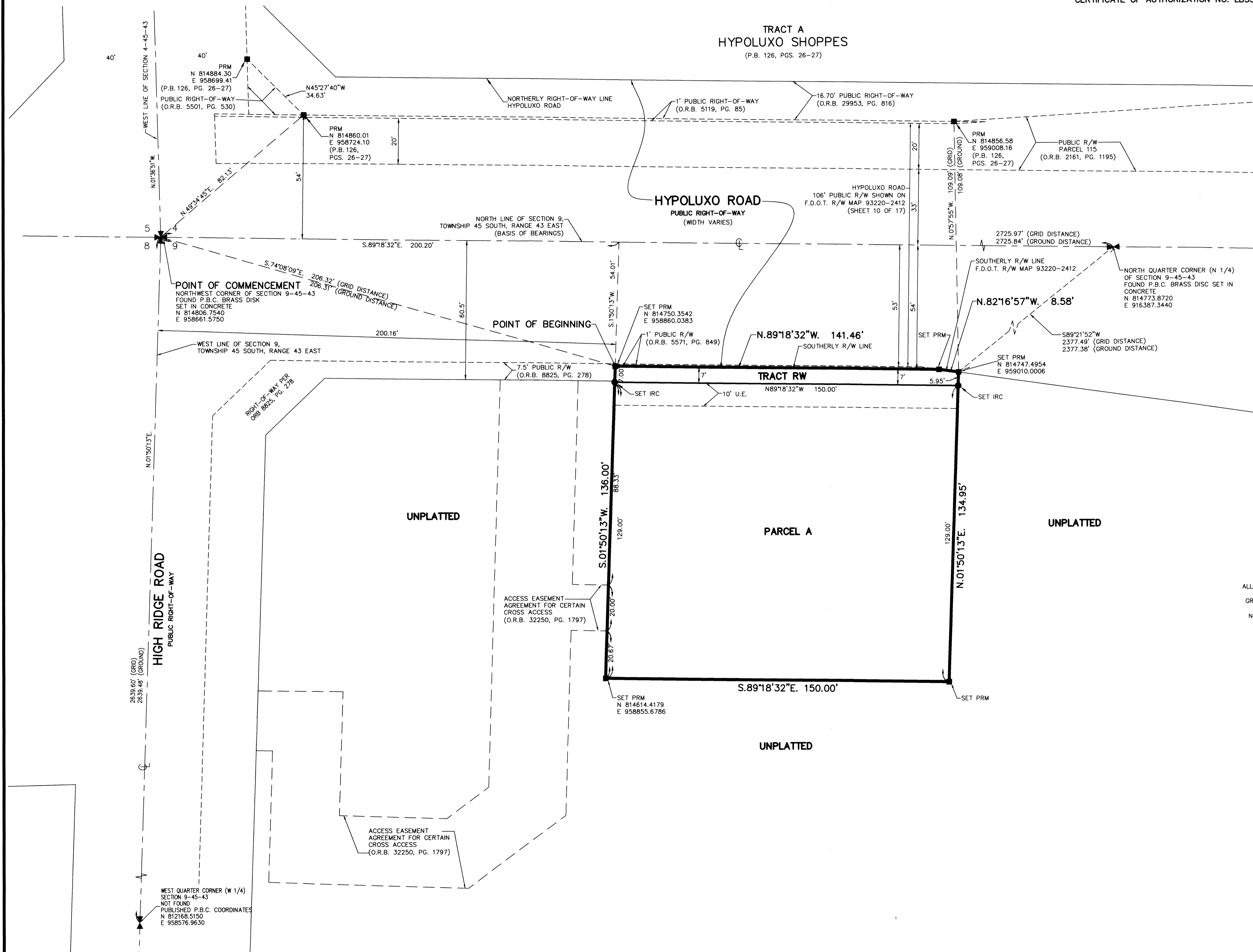
# RIDGELINE DUNKIN

A PORTION OF THE NORTHWEST ONE-QUARTER OF SECTION 9,  
TOWNSHIP 45 SOUTH, RANGE 43 EAST, PALM BEACH COUNTY, FLORIDA.

THIS INSTRUMENT PREPARED BY  
DAVID P. LINDLEY  
OF  
**CAULFIELD & WHEELER, INC.**  
SURVEYORS - ENGINEERS - PLANNERS  
7900 GLADES ROAD, SUITE 100  
BOCA RATON, FLORIDA 33434 - (561)392-1991  
CERTIFICATE OF AUTHORIZATION NO. LB3591

168

**SHEET 2 OF 2**



**GRAPHIC SCALE**  
( IN FEET )  
0 10 20 40  
INTENDED DISPLAY SCALE 1 INCH = 20 FEET

**NOTES**  
**COORDINATES, BEARINGS AND DISTANCES**  
COORDINATES SHOWN ARE GRID  
DATUM = NAD 1983 (1990 ADJUSTMENT)  
ZONE = FLORIDA EAST  
LINEAR UNIT = U.S. SURVEY FEET  
COORDINATE SYSTEM 1983 STATE PLANE  
TRANSVERSE MERCATOR PROJECTION  
ALL DISTANCES ARE GROUND, UNLESS OTHERWISE NOTED  
SCALE FACTOR = 1.000046091  
GROUND DISTANCE X SCALE FACTOR = GRID DISTANCE  
BEARINGS AS SHOWN HEREON ARE GRID DATUM,  
NAD 1983 (1990 ADJUSTMENT), FLORIDA EAST ZONE.

**LEGEND/ABBREVIATIONS:**

- ⊕ - CENTERLINE
- C.M. - CONCRETE MONUMENT
- E - EASTING (WHEN USED WITH COORDINATES)
- F.D.O.T. - FLORIDA DEPARTMENT OF TRANSPORTATION
- IRC - IRON ROD WITH CAP STAMPED "C&W LB3591"
- L.B. - LICENSED BUSINESS
- N - NORTHING (WHEN USED WITH COORDINATES)
- O.R.B. - OFFICIAL RECORDS BOOK
- P.B. - PLAT BOOK
- P.B.C. - PALM BEACH COUNTY
- F.E.C. - FLORIDA EAST COAST
- PG(S). - PAGE(S)
- R/W - RIGHT-OF-WAY
- U.E. - UTILITY EASEMENT
- NAD - NORTH AMERICAN DATUM
- 9-45-43 - DENOTES SECTION 9, TOWNSHIP 45 SOUTH, RANGE 43 EAST
- IRC - DENOTES 5/8 INCH IRON ROD AND CAP LB3591
- (P) - DENOTES ROAD PLAT BOOK 1, PG. 236 PALM BEACH COUNTY RECORDS
- P.R.M. - DENOTES PERMANENT REFERENCE MONUMENT 4" x 4" x 24" CONCRETE MONUMENT WITH ALUMINUM DISK STAMPED "C&W PRM LB3591"

**SITE DATA**  
**CONTROL NO. 1985-122**